



Flicka Friends



Spring 1998

Vol. 3, No. 4

s/v African Moon

By Rod Bruckdorfer

"Salty looking little boat, what is it?" begins the conversation. I usually respond, "What do you think it is?" "She looks like a Flicka but I did not know Pacific Seacraft made an aft-cabin version." At this point, I explain that AFRICAN MOON was built in 1976 before Pacific Seacraft existed. The conversation usually ends with the remarks, "You can go anywhere in that boat - a proper blue water cruiser."

Our Flicka is a custom built aft-cabin Nor'star/Westerly built in 1976. The hull, decks and main cabin were built to Bingham's design, whereas the aft-cabin, interior and sail plan were designed by Clyde Butcher (the original owner). We completely rebuilt and refitted the boat over a 5 year period from 1989 to 1994. AFRICAN MOON is very much a two-person boat.

Her aft-cabin has two quarter berths with storage beneath. The cockpit is 3 ft. long and has a two-speed Lewmar #25 bronze jib sheet winch on each cockpit coaming and two single speed Lewmar #10 bronze staysail sheet winches on the cabin top each side of the companionway.

AFRICAN MOON's specifications are as follows:

LOA	27'	LOD	20'
Beam	8'	Draft	3' 9"
Displacement	6,500 lb. (empty)		
Ballast	2,200 lb. (lead)		



Rod Bruckdorfer's Nor'Star Flicka
s/v AFRICAN MOON

Mainsail	150 sq. ft.
Jib	175 sq. ft.
Staysail	75 sq. ft.
Total	400 sq. ft.
Engine	6 hp Farymann.
Solar Panels	22 watts
Fuel	22 gal.-two tanks
Alternator	105 amp.-K rated
Water	65 gal.-two tanks
Regulators	Link 2000R
Batteries	2/180 amps total
Ground Tackle	25 lb. CQR Fortress FX-11
Windvane	Cape Horn

Anderson #10 winches are located on the mast for the main and jib halyards. A three-part pendent-purchase is used to tension the staysail luff. The main cabin is divided by a bulkhead into a saloon and v-berth. Head and galley are to port with a settee to starboard. The v-berth has two food lockers P&S, two selves P&S, a sail locker forward and a chain locker in the bows of the boat.

"Set her tall mast before the wind, let her canvas billow to the sky and she will do what she was meant to do - "broad reach through life" - Lin Pardey.

Flicka Friends is nearly back on track. Look for another issue in October, It will include a Flicka article from Anthony Steward of South Africa.

About Flicka Friends

Flicka Friends is a subscription newsletter written specifically for the people who own, crew aboard, or are interested in the Flicka, a Bruce P. Bingham design.

Based on the Newport boats of Block Island Sound, this little ship has been built from various materials since the 1960's until the present day.

Hulls have been completed by home builders using plans supplied by Bruce Bingham. More than 400 plans were sold. According to Bruce Bingham, many Flickas can be found in New Zealand, Australia and Sweden.

Commercial builders of the Flicka include Nor'Star, Westerly Marine and Pacific Seacraft Corporation.

Pacific Seacraft (Fullerton, California) has built nearly 450 hulls. The Flicka is a current production model.

Flicka Friends is published quarterly. Articles, photographs and letters are welcome and encouraged.

Please note that the date next to your name, it indicates when your subscription needs to be renewed. The cost of a subscription is \$10.00 US and can be mailed directly to the editor:

© Copyright 1998

Dennis Pratt
Flicka Friends
3775 Gregory Drive
Northbrook, IL 60062-7103
(847) 299-5744

Dennis1492@aol.com

KAWABUNGA! (Dude?)

By Charlie & Margaret Dewell

We are publishing a book about our trip in the South Pacific. "Kawabunga's South Seas Adventure" is scheduled to be released on September 1, 1998. The price has not been established.

Our hard cover book has 230 pages of text with an appendix including an equipment list, ships sighted between Oahu and LA and an index. There are chart sketches for each chapter and eight pages of color photographs.

It is "A lighthearted book about following your dream," about a middle aged couple who take a mid-life (hopefully!) pause in their careers to fulfill a dream to sail to the South Pacific Islands. We discuss preparation, equipment, stores, equipment storage, safety equipment and passage-making.

We sailed 10,000 miles. Departing San Diego, I sailed single handed to Nuku Hiva in the Marquesas Islands. Then on to Tahiti where my wife Margaret joined me. We cruised the Societies and left Bora Bora for Christmas Island, Palmyra Atoll and the Hawaiian Islands. The boat was single handed back from Oahu to L.A.

Our Flicka, **KAWABUNGA!** was built by Pacific Seacraft in 1981 - hull number 171. We purchased it from the factory in 1992.

To reserve a copy, please contact us at:

South Seas Publishing Company
14025 Panay Way
Marina del Rey, CA. 90292
(310) 305-4123 Tel.
(310) 305-3757 Fax.

CDewell722@aol.com

For Hire?

Gill Outerbridge is interested in hiring a Flicka for a month of sailing in the Chesapeake Bay this fall. If you can help her with this trip, please contact her at:

Gill Outerbridge
P.O. Box GE 225
St. Georges, Bermuda GE BX
(809) 297-1853

Next Issue

The next issue of Flicka Friends will be mailed around the last week of September. It will bring Flicka Friends back in line with the former publishing schedule.

If you have a story about the summer trips aboard your Flicka, I'd like to include it in the next issue. You can send it to me in Montana or to Dennis in Illinois. Thanks!

Thank You

I would like to thank Flicka Friends Jill Geary, Rod Bruckdorfer, and Bill Strop for providing articles and photos for this edition of Flicka Friends.

My thanks also to those who have taken the time to forward a photo of their particular Flicka for the photo issue, including; Rod Bruckdorfer, Charlie Dewell, Jill Geary, Glynn McMillan, T.C. Vollum, Bill Barnes, Saul Hershenov, and Tim Sweeney.

If you want to include your Flicka, please forward a photo & caption to:

Tom Davison
1576 Lancelot Place, # 6
Billings, MT 59105
(406) 248-8240

windigo@imt.net

BRISTOL BOATS

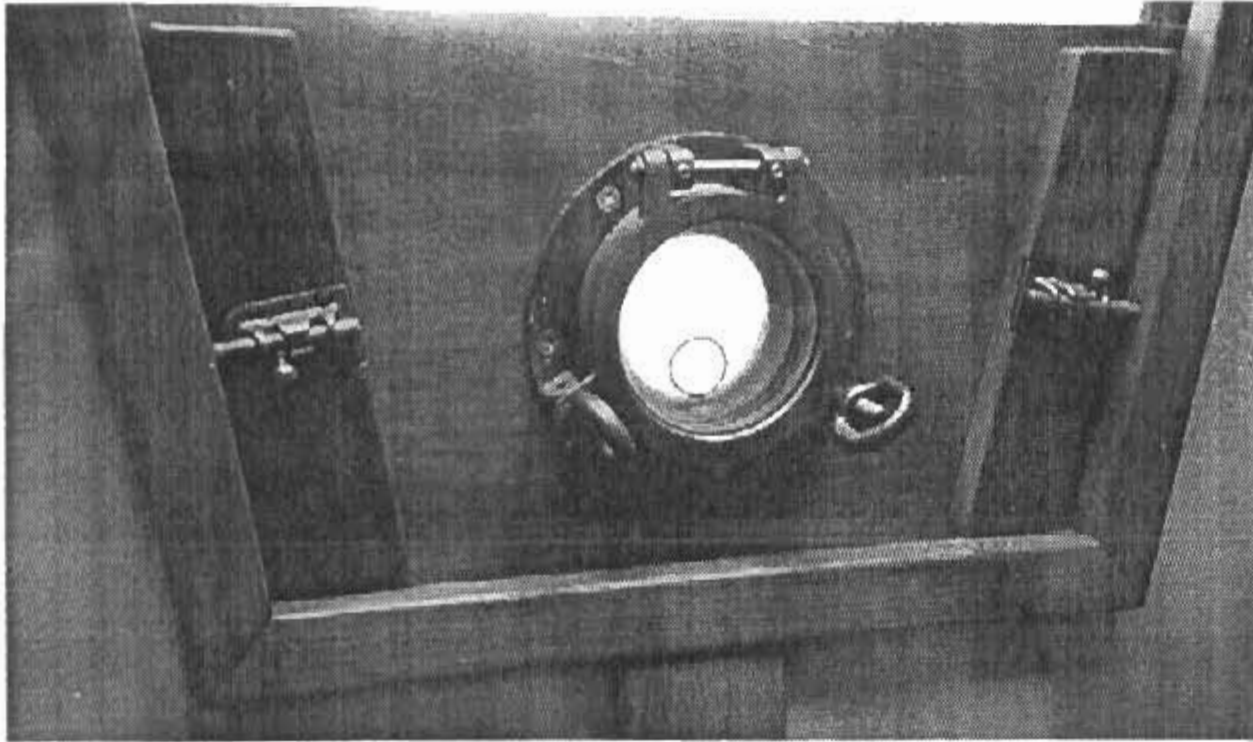


Photo One

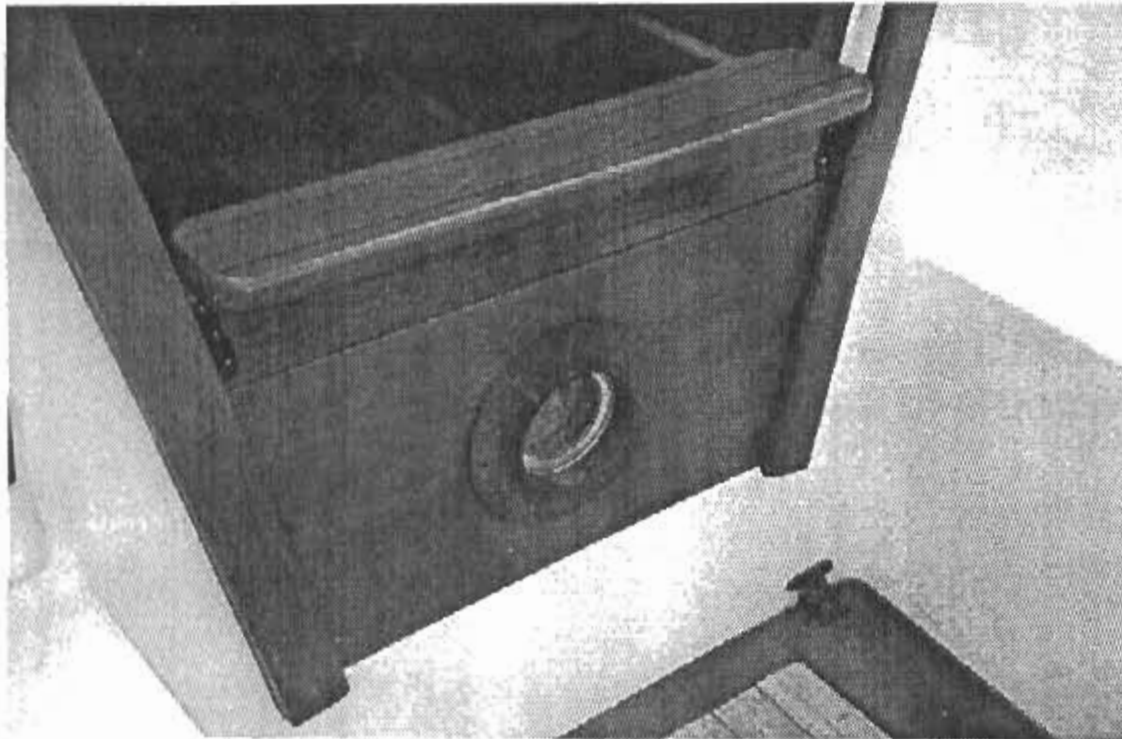


Photo Two

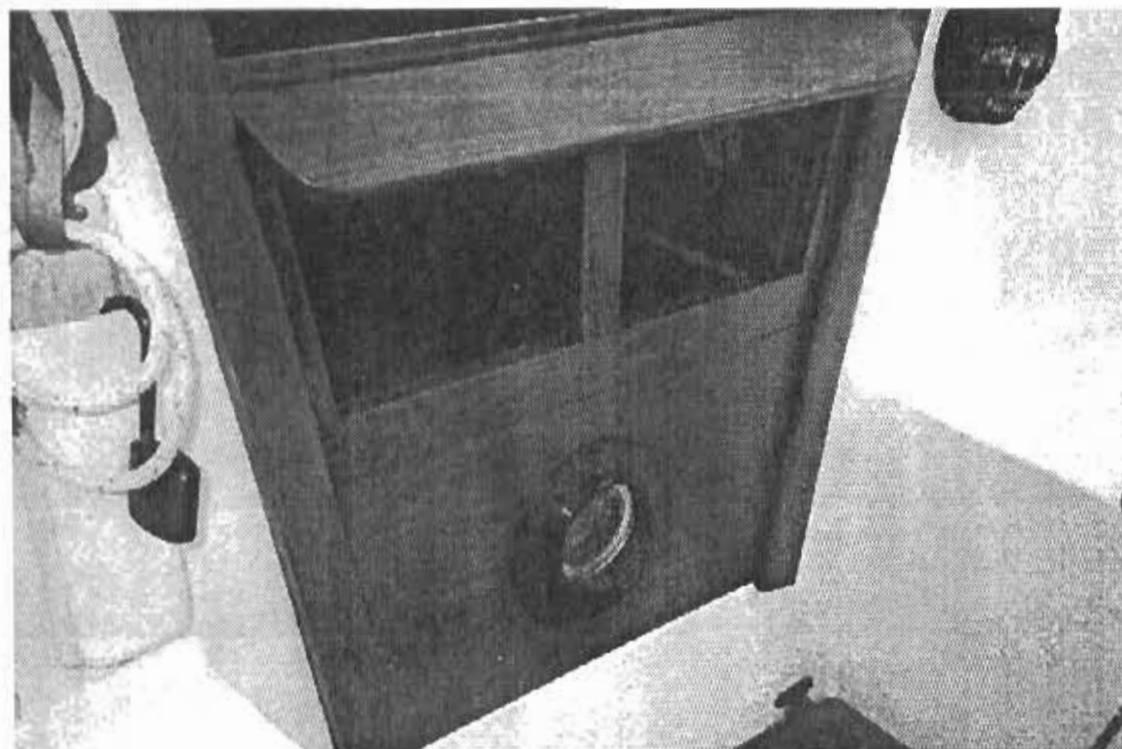


Photo Three



Photo Four

By Bill Strop

Practical Sailor admonishes we Flicka owners to compensate for lack of a high bridgedeck by bronze bolting the bottom washboard. Advice well taken.

But, why not also add a small bronze port to provide a glimpse of the cockpit, tiller and windvane? (Photo One).

Maybe a leather bound teak seat to relieve cockpit crowding? (Photo Two)

Perhaps a middle washboard hooded teak screen bronzed pinned at the outer edges to prevent sheet snagging? (Photo Three)

When it's all "buttoned up" it looks like the photo above. (Photo Four)

FLICKA FEVER

By Jill Geary

Things heat up in August here in Southern California, and without a doubt the hottest event at the Isthmus Cove of Santa Catalina Island was the 1997 Flicka Rendezvous. Ten Flickas put in, and shared a splendid August 22nd - 24th weekend for the "Flicka Friends" Rendezvous.

The little ships began arriving on Thursday (over half of them single-handed), and were efficiently directed by the Two Harbors Harbor Patrol to the beach side "string-line" where they ultimately were "strung-out," keeping the group in an attractive and eye catching row. By Friday evening, the festivities officially began, as happy hour was enjoyed between (literally!) two Flickas as we floated within multi-colored inflatables, passing around hor d'oeuvres and stories.

It seemed everyone had a favorite "Flicka at Sea" adventure to share, with the mighty ship always the heroine. Of particular interest was the experience level of these sailors.

Jane and Al Fox of Santa Barbara have cruised extensively in the South Pacific. Their multi-year journey aboard their Rafiki 35 culminated in a roll over, with Jane being severely injured, and finally ended with both being airlifted to safety. As Jane says: "Whenever you're in bad weather, nobody wants to be there; but then you go back and do it again." Over the last 14 years they have cruised their Flicka QE too from the Golden Gate to Cabo San Lucas and La Paz, Mexico.

Mel Dinesen, an octogenarian, lives aboard his Flicka MEL 'n ME in Channel Islands Harbor, and single-handed in "washing machine" seas to arrive just in time for the barbecue.



LOKI II steering herself as Alan relaxes, enroute to Catalina for the Rendezvous



Three pretty Flickas at the Isthmus Cove, Santa Catalina: ESPERANZA, LOKI II & KAWABUNGA

HITS CATALINA ISLAND



Three of the ten Pacific Seacraft Flickas:
QE too, NOD, & TARDE ENCANTADA



Strung-out on the String Line:
VARUA, TARDE ENCANTADA, NOD, & QE too

Alan Taylor, another live-aboard, has single-handed his Flicka **LOKI II** for years along the southern California coastline, circumnavigating Catalina numerous times, sometimes in gale force winds and seas.

Jill Geary aboard **EPSERANZA** is an offshore sailor, most recently completing a passage from Hawaii to Alaska as watch captain on a larger yacht of all women, yet receives much pleasure in single-handing.

Richard Halmy taught ocean sailing for the City of Los Angeles for ten years. He and wife Patty Cox sail their beautiful, black gaff-rigged cutter **NOD** out of Long Beach (with their matching black Labrador retriever aboard). Says Richard: "Just close your eyes as you take the tiller and you'd swear you're at the helm of a big yacht!"

And then you have Ed and Eula Casselman of Newport Dunes, married 49 years who, each time they go sailing aboard **TARDE ENCANTADA** (named for the song Afternoon Delight), must lower and raise the mast for bridge clearance. Ed saw their Flicka when she was new at the Long Beach Boat Show, and immediately realized he wanted a beautiful cruising boat "just like it," with Eula's response being "Well buy this one!" So they did. And that was over 17 years ago!

By Saturday morning it was time defend one's bragging rights as the gaggle of dinghies with owners inside floated along the row of little ships, lobbying their position to win one of the prizes donated by Pacific Seacraft. Categories of competition included:

"Oldest Flicka
Val Kask
VARUA - Marina del Rey

Cont. on Page 6

FLICKA RENDEZVOUS

"Most Traditional"

Richard Halmy and Patty Cox
NOD - Gaff-Rig Long Beach

"Flicka that looks most like her owner"

Ken and Eloise Harback
ENYA - Channel Islands

"Youngest Flicka"

Jill and Steve Geary
ESPERANZA - Dana Point

"Flicka that traveled the farthest"

Al and Jane Fox
QE too - Santa Barbara

"Best "Maintained Flicka"

Jill and Steve Geary
EPSEERANZA - Dana Point

Although rumors flew that Ken Harback was paying off the judges under the table (under the keel?), the rendezvous committee continues to take a stand that all judging was fair and honest (for the most part).

Saturday evening was a treat for the Flickans as they gathered ashore for a catered beach side barbecue. Great food and fellowship was followed by our guest speakers; Charlie and Margaret Dewell of Marina Del Rey. Liveaboards and managers of Holiday Harbor, they recently completed 10,000 miles of blue water cruising aboard their beautiful blue 1981 Flicka, **KAWABUNGA!**

Taking the stage, Charlie and Margaret shared with an appreciative audience their pledge to each other seven years ago to "sail off to the South Pacific." Shortly thereafter they purchased and outfitted their Flicka of the passage.

By spring of 1995, **KAWABUNGA!**, with solo Charlie aboard, headed out of San Diego Bound for Nuku Hiva

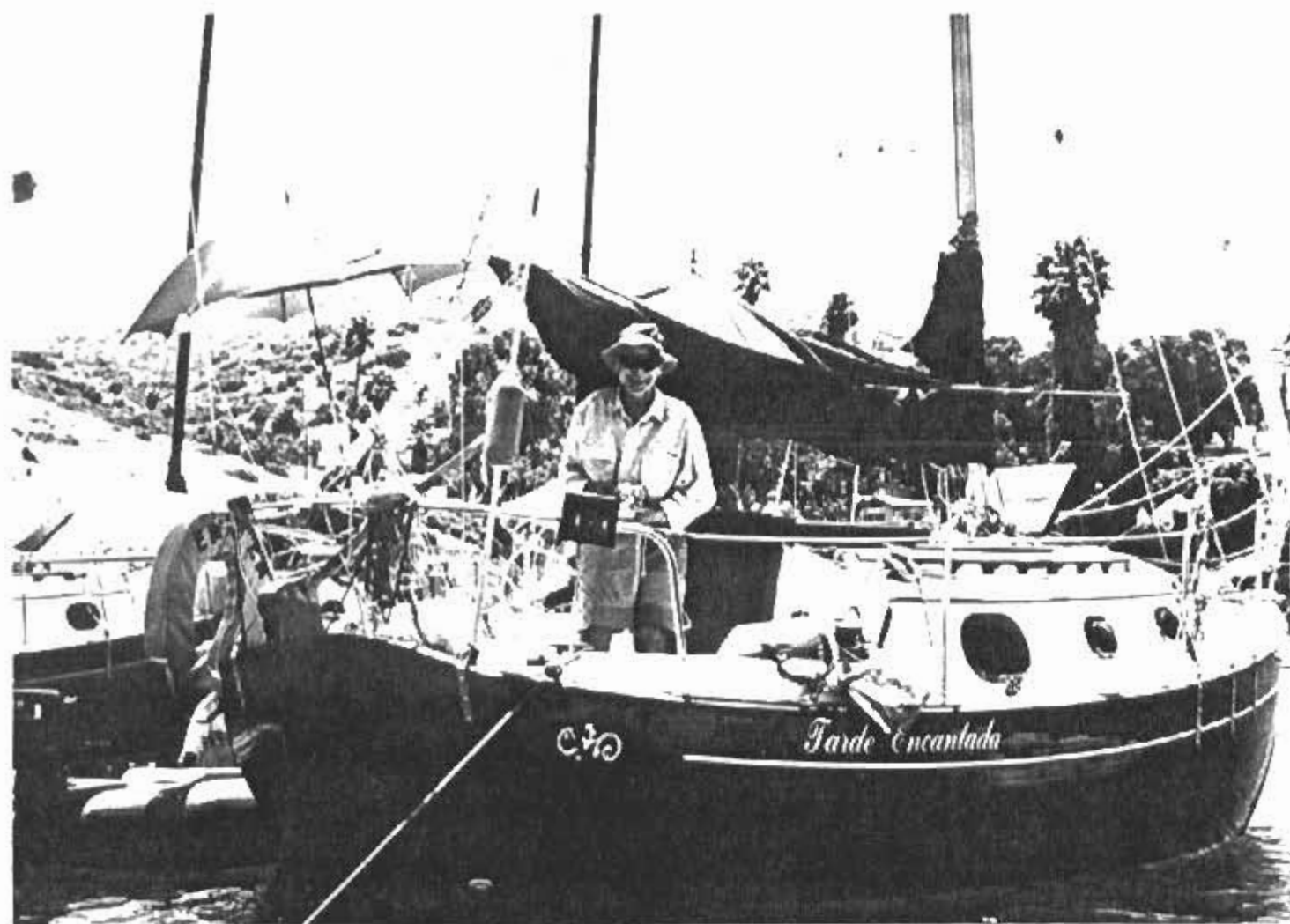


Friday Night between the Flickas,
LOKI II left and KAWABUNGA right.

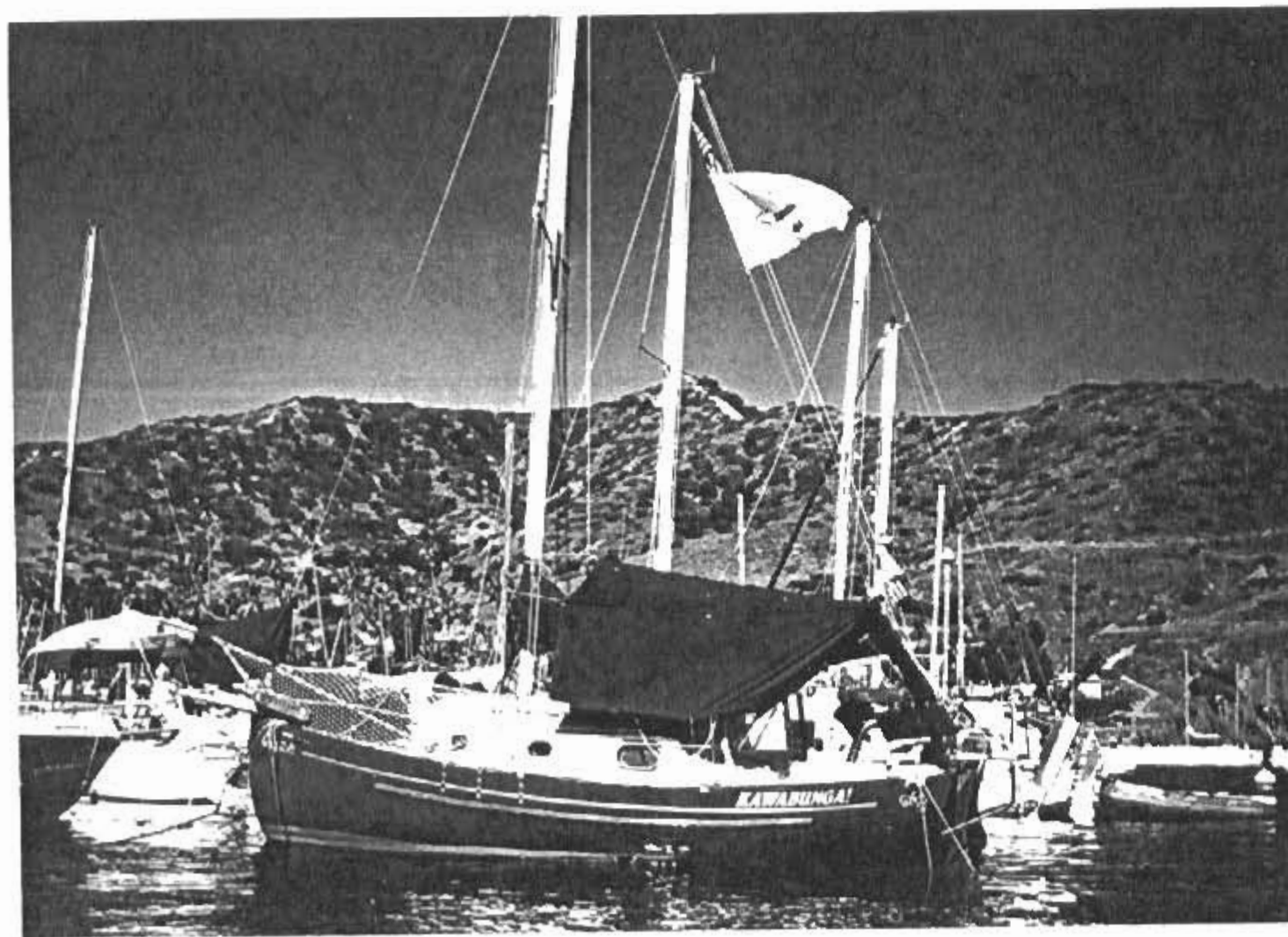


The Saturday BBQ ashore at
Isthmus Cove, Santa Catalina Island

AT CATALINA ISLAND



Ed & Eula Casselman's
TARDE ENCANTADA



KAWABUNGA! Flying her battle flag,
still beautiful after 10,000 miles.

(Marquesas, French Polynesia). A mere 42 days (!) and 2,847 nautical miles later, Charlie made landfall.

Margaret caught up with Charlie in Tahiti and they sailed together throughout the South Pacific (Bora Bora, Christmas Island, Palmyra), enjoyed time sailing amongst the Hawaiian Islands, and eventually **KAWABUNGA!** brought a solo Charlie back home to Marina del Rey, only 12 months after the journey began.

We sat in awe of their experiences and landfalls as they each described their individual perspective and challenges of a big trip aboard a little ship.

Says Charlie, "You have to live your life; you can't protect yourself from everything." Charlie and Margaret are currently publishing a "lighthearted" account of how to follow your dreams. (See Page Two). Our beach side evening was perfectly complete with the drawing for a new Garmin GPS, made possible by Dream Catcher Yachts of Dana Point, the authorized Pacific Seacraft Dealer. And Charlie and Margaret were the winners!

A special guest Saturday was Robin Bradshaw of the Pacific Seacraft factory. Robin's long time association with and insight regarding Flickas was invaluable and of special interest to the Flickans.

Many new friendships were created and confirmed during this short time on an island in August. No doubt each Flicka owner feels a special blessing to own such a distinctive and trustworthy little ship. A Sunday's beautiful sunrise was in evidence, so too was the image of yet another Flicka silhouette, heading into the open ocean. And that's where she's at home.

Flicka Friends - Spring 1998

Please add my name to the Flicka Friends and those who are interested in the Flicka, a Bruce P. Bingham design. Your name will not be given to any other publication at any time. This newsletter is not for profit. Any fees collected will be used to produce and distribute the newsletter.

To start a subscription, make a \$10.00 check payable to Flicka Friends or Dennis Pratt and send to the address on the bottom of this page. The date after your name on the label is the expiration date of your current subscription. Thank you all very much.

NAME _____

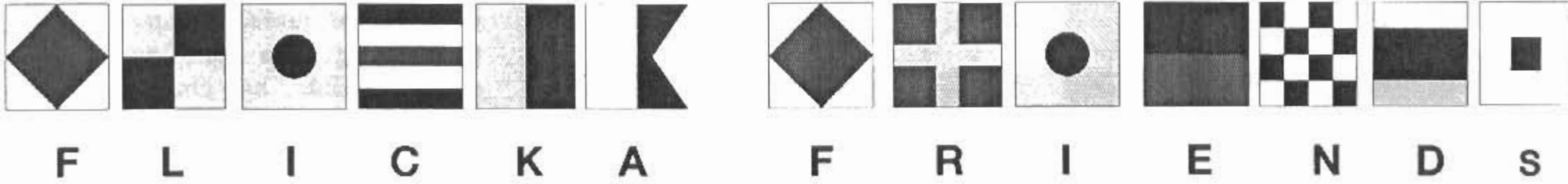
ADDRESS _____

CITY _____ STATE _____ ZIP _____

TELEPHONE _____ E-MAIL _____

Do you own a Flicka? YES NO Hull Number _____ Boat Name _____

"Flicka Friends" © 1998 by Dennis Pratt. All rights reserved, except for information that may have a prior copyright used here by permission.



Dennis Pratt
Flicka Friends
3775 Gregory Drive
Northbrook, IL 60062-7103

Place
 U.S.
 Postage
 Here

To: