

1985 Pacific Seacraft Flicka For Sale

1985 Pacific Seacraft Flicka Hull # 314

My Pacific Seacraft Flicka is for sale. It is a Marconi rigged sloop with an inboard diesel engine and an enclosed head.

Located on Lopez Island, Washington, it is in perfect place for cruising the San Juan Archipelago, the Gulf Islands, and the Salish Sea.

Currently stored on land and ready to launch with a plus four foot tide in Fisherman Bay.

Offered at \$30,000 US

Pacific Seacraft Flicka # 314

il: flicka20forsale@gmail.com

Flicka # 314 at Friday Harbor Marina in the San Juan Islands in the Salish Sea.

Specifications, Equipment List, Maintenance, and Refit Information

Anchoring

- Anchor Chain - 50' x 1/4" - **New 2016**
- CQR 25 Pound Anchor - **New 2015**
- Fortress FX-16 Anchor - **New 2015**
- Plait Anchor Line: 200' x 1/2" - **New 2016**

Communication

- Icom VHF Radio
- Standard Horizon Portable Radio w. GPS

Deck / Cabin Top / Cockpit

- Bow Cleat - Single
- Bow Sprit - Two Anchor Openings one with Bronze Roller
- Companionway Sea Hood
- Vinyl Cockpit Cushions

Dinghy

- Dinghy
- Honda 2 HP Outboard Engine

Docking

- Double-Braid Lines - 1/2" x 15' (4)
- Double-Braid Lines - 1/2" x 25' (6)
- Fenders - Double B - 8" x 20" (3)
- Fender Rack - Starboard rail
- Shurhold Boat Hook & Cleaning Brush

Electrical - AC

- Smartplug AC Power Inlet - **New 2014**
- Smartplug 50' Shore Power Cord - **New 2014**
- Smartplug Shore Power Cord Cover - **New 2014**
- AC Wiring 10-3 to Main Switch - **New 2014**
- Blue Sea Systems AC Panel - **New 2017**
- Blue Sea Systems ELCI Panel - **New - Not Installed**
- Blue Sea Systems 10 Amp Charger - **New - Not Installed**
- Partial AC Wiring Replacement - **New 2017**
- D.E.I. Galvanic Isolator - **New - Not Installed**
- Maringo GFI Outlets (3) - **New - One installed.**

Electrical - DC

- Blue Sea Systems ACR - **New 2017**
- Blue Sea Systems Battery Switch - **2019 -Not Installed**
- Victron Smart Shunt - New - Not Installed

Flags

- Teak Flag Staff US Ensign
- U.S. Flag & U.S. Ensign Flag - Four - **New 2019**

Galley / Fresh Water

- CNG Stove
- Origo 4100 Alcohol Stove - **Used - Ready to install.**
- Refrigeration System
- Freshwater pump
- Sea water Pump
- Freshwater tank cover (Starboard) - **Replaced 2012**

Hull

- Bow Sprit - **New 2018**
- Pintles & Gudgeons - **New - Completed Spare Set**

Maintenance

- Bilge Pump Switch/Fuse (Blue Sea Systems) - **New 2014**
- Bilge Pump Float Switch (Rule) - **New 2014**
- Cutlass Bearing - **New 2014**
- Prop Shaft Packing - **New 2014**
- Prop Shaft Zinc - **New 2014**
- Yanmar Water Pump Gasket - **New 2014, 2016, 2017**
- Yanmar Water Cooling Impeller - **New 2014, 2016, 2017**
- Yanmar Water Pump - **New 2016**
- Yanmar Water Temp Sender - **New 2014**
- Yanmar Engine Salt Treatment - **2012, 2013, 2014, 2015, 2016**
- Full Marina Winterization - **2012, 2013, 2014, 2015, 2016**

Navigation

- Garmin 441s Chartplotter - **New 2017**

Pelican Cases

- 1200 - Spare Engine Parts
- 1200 - EMS Kit - **New 2015**
- 1500 - EMS Kit - **New 2015**
- 1500 - Spare Yanmar Parts - Large - **New 2015**

Safety

- Chest harnesses (2)
- Chest Harness Tethers (2)
- Cockpit Padeye - **New 2014**
- Flares - **New 2015**
- Lifesling
- Type IV PDF - **New 2015**
- Type III PFD (3)
- Type III PDF - Inflatable - **New 2012**
- Rule 2000 GPH Bilge Pump

Sails

- Tan Barque Main with two reefs - **New 2009**
- Tan Barque 110% Jib - **New 2009**

Sanitation

- Lavac Head - **New 2010**
- Sanitation Hoses - **Replaced 2019**

Spare Engine Parts

- Yanmar Alternator
- Yanmar Engine Head (Complete)
- Yanmar Engine Manuals
- Yanmar Fan Belt
- Yanmar Fuel Injector
- Yanmar Fuel Pump
- Yanmar Impeller & Gaskets (5)
- Yanmar Major Repair Kit
- Yanmar Minor Repair Kit
- Yanmar Starter
- Yanmar Thermostat
- Yanmar Water Temperature Sensor



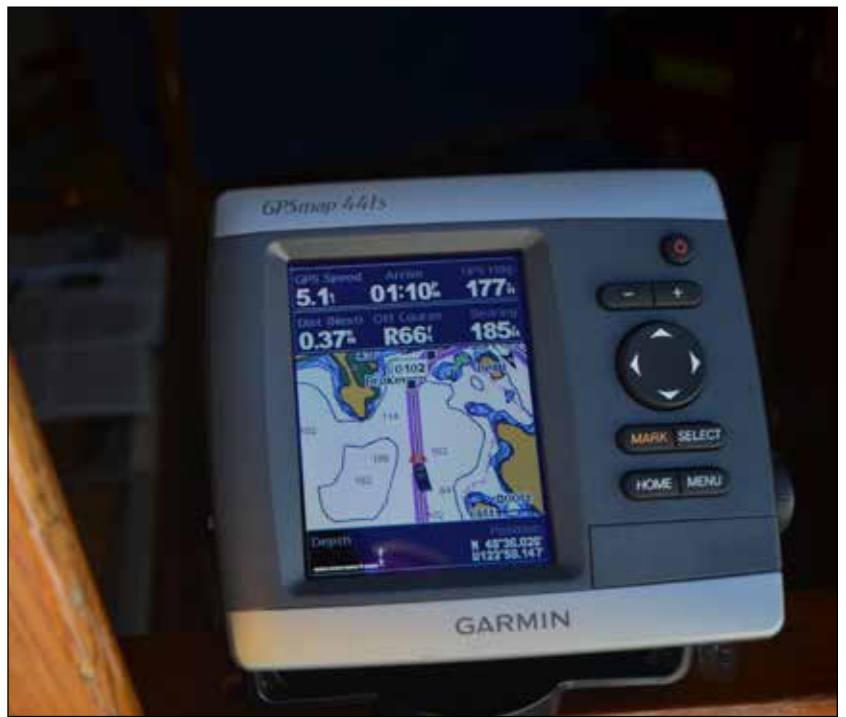
Flicka # 314 under sail in the Spieden / San Juan Channel area of the San Juan Islands.



Flicka # 314 at the dock in Roche Harbor Marina.



V-Berth of Pacific Seacraft Flicka # 314.



Garmin GPSmap 441s which is mounted on a swing arm that can be moved into the companionway.



Old Navigation arrangement before the purchase of the Garmin 441s GPSmap.



The Yanmar 1GM10 Inboard Diesel Engine aboard Flicka # 314.



CNG Tank and Lavo Vacuum Head



Lavo Manual Pump and Refrigeration System



At the Port of Friday Harbor, San Juan Island.



Early Morning Crossing of the San Juan Channel.



Approaching the dock on Jones Island.



Hauling s/y BLUE SKIES after another trip in the Salish Sea.



Sailing in the San Juan Channel between Lopez and San Juan Islands.



At Deer Harbor Marina on Orcas Island.



Stopping at the Olga Dock on the way to Rosario Resort.



At the fuel dock at Rosario Resort Marina in the San Juan Islands in the Salish Sea.